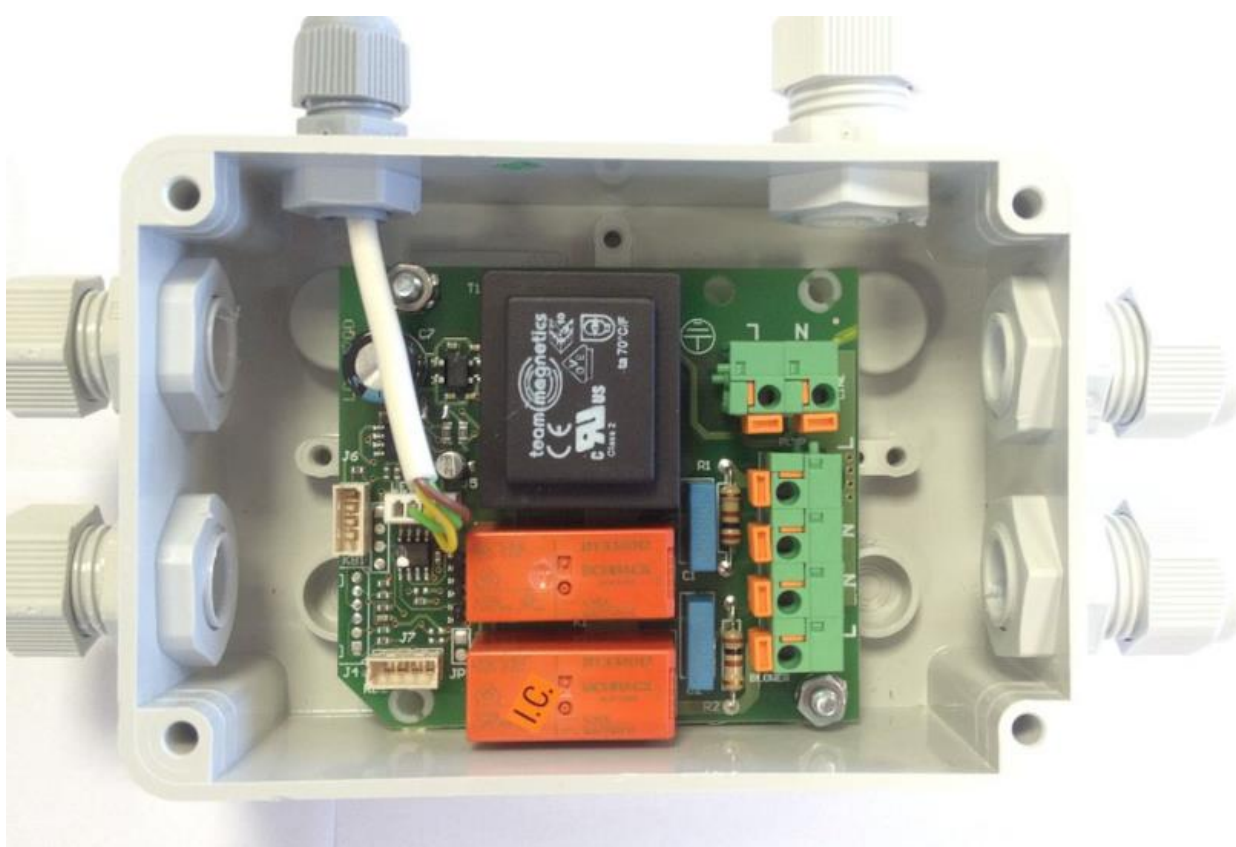


BUILT IN 2 FUNCTIONS PUMP - BLOWER



Leggere e conservare queste istruzioni

Astrel Group

+39 0481 637301
info@astrelgroup.com
www.astrelgroup.com

Headquarters
Via Friuli, 10 - Quaternario Uno
31020 San Vendemiano - TV - IT

Legal address & Production plant
Via Isonzo, 21/E
34070 Mossa, GO - IT

C.F. e P.IVA IT 00187070313
Cap. Soc. EUR 500.000 i.v.
REA nr. GO-49936

SOMMARIO

1	GENERAL DESCRIPTION.....	3
1.1	Electrical description	3
1.1.1	Connections	3
1.1.2	Electrical Characteristic	3
1.1.3	Mechanical Characteristic.....	4
	LAYOUT	4
1.1	CAPACITIVE keypad	5
2	USER FUNCTIONAL SPECIFICATION	5
2.1	START.....	5
2.1.1	Whirlpool function	5
2.1.2	Blower function	6
2.1.3	Dry function.....	6

Leggere e conservare queste istruzioni

Astrel Group

+39 0481 637301
info@astrelgroup.com
www.astrelgroup.com

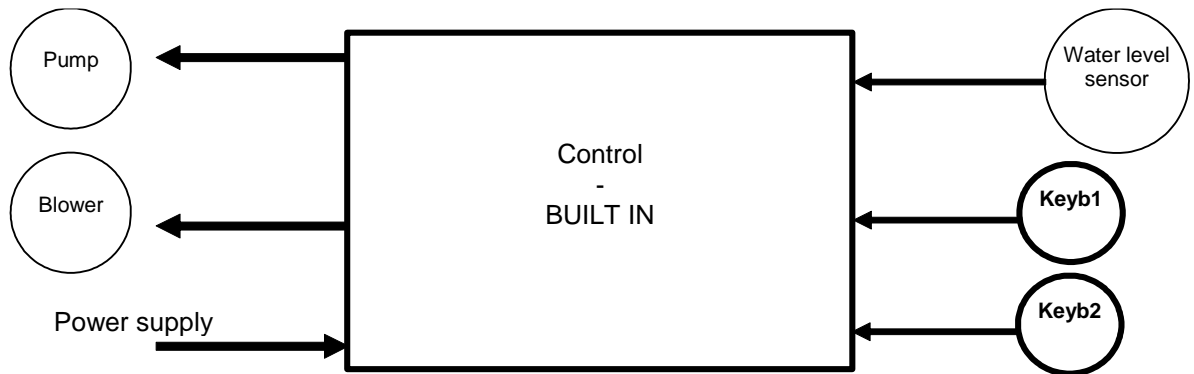
Headquarters
Via Friuli, 10 - Quaternario Uno
31020 San Vendemiano -TV -IT

Legal address & Production plant
Via Isonzo, 21/E
34070 Mossa, GO - IT

C.F. e P.IVA IT 00187070313
Cap. Soc. EUR 500.000 i.v.
REA nr. GO-49936

1 GENERAL DESCRIPTION

The scheme shown below represent the external connection of the system.



1.1 Electrical description

The control manages the functions of the system. It read the input coming from the keypads, read the water level sensor status and control pump and blower. The external units (keypads, blower, pump and water level sensor) are linked to the control by wires connections.

1.1.1 Connections

- Input
 - Power supply: 2 coil terminals (Ref. Ser. LINE L N).
 - water level: 4 terminals (Molex) (Ref. Ser. LEV).
 - Keypad: 6 terminals (Molex) (Ref. Ser. J4)..
 - Cap. Keypad: 4 terminals (Molex) (Ref. Ser. KB1)..
 - Cap. Keypad: 4 terminals (Molex) (Ref. Ser. KB2)..
- Output
 - Pump: 2 coil terminals (Ref. Ser. PUMP L N).
 - Blower: 2 coil terminals (Ref. Ser. BLOWER L N).

1.1.2 Electrical Characteristic

Power supply: 230Vac \pm 10% 50/60Hz

Pump load: 0.95HP 230Vac

water level sensor: Astrel PFSELI05CCC1

Leggere e conservare queste istruzioni

Astrel Group

+39 0481 637301
 info@astrelgroup.com
 www.astrelgroup.com

Headquarters
 Via Friuli, 10 - Quaternario Uno
 31020 San Vendemiano - TV - IT

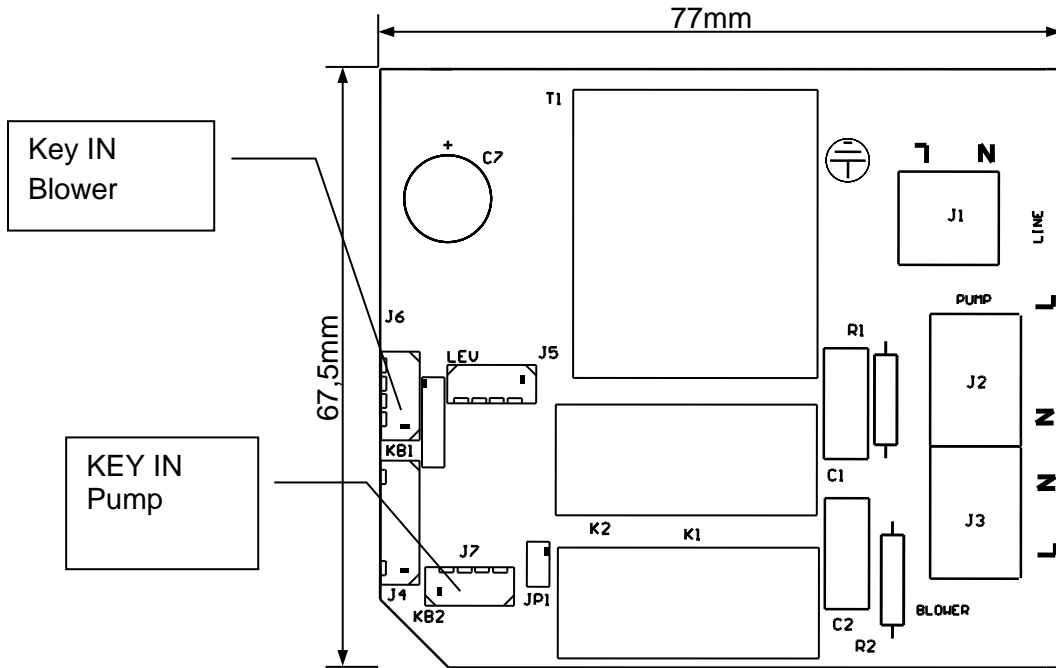
Legal address & Production plant
 Via Isonzo, 21/E
 34070 Mossa, GO - IT

C.F. e P.IVA IT 00187070313
 Cap. Soc. EUR 500.000 i.v.
 REA nr. GO-49936

1.1.3 Mechanical Characteristic

The electronic board can be installed in the pump case.

LAYOUT



Leggere e conservare queste istruzioni

Astrel Group

+39 0481 637301
info@astrelgroup.com
www.astrelgroup.com

Headquarters
Via Friuli, 10 - Quaternario Uno
31020 San Vendemiano - TV - IT

Legal address & Production plant
Via Isonzo, 21/E
34070 Mossa, GO - IT

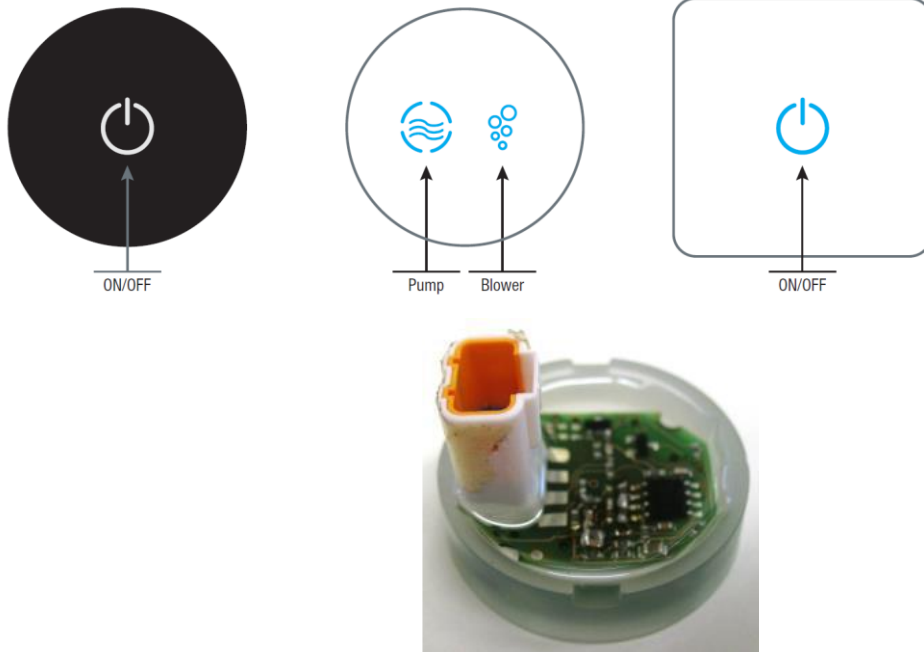
C.F. e P.IVA IT 00187070313
Cap. Soc. EUR 500.000 i.v.
REA nr. GO-49936

1.1 CAPACITIVE keypad

The Keypads, connected directly to the board into the pump case turn on/off all the functions, and show the state of the system.

KB1 = key button: 'ON-OFF Whirlpool'

KB2 = key button: 'ON-OFF Blower'



2 USER FUNCTIONAL SPECIFICATION

This chapter describe what the user can do using the keypad and what the keypad show throw the led about the function selected.

2.1 START

After the power on:

- the LED has switched on for 2" then:
- the LED is showing the presence or absence of the water in the tub.
 - LED OFF if there is no water,
 - LED 0,5" ON / 0,5" OFF if there is water but engines not running,
 - LED ON if engine is running.

2.1.1 Whirlpool function

- 1) If the user pushes the ON-OFF Whirlpool key once when the system is in standby, or the blower is running, if there's water:
 - the led switches on.
 - setting the pump timeout to 20 min.

Leggere e conservare queste istruzioni

Astrel Group

- the pump begins to run.
- if there's no water
- if dry function is active the led doesn't blink

2) If the user pushes for 3 sec the key while the pump is running not in bumping mode

- the control restart the pump timeout to 20 minute.
- the led blink (0,25/0,25s on/off) for 3 sec.

The pump can stop:

- by the user pressing the ON/OFF Whirlpool key.
- at the end of the pump timeout.
- If there's no water level for more than 3 seconds (led fixed off).

2.1.2 Blower function

If the user pushes the ON-OFF Blower key once when the system is in standby, or the pump is running.

if there's water:

- the led switches on.
- setting the blower timeout to 20 min.
- the blower begins to run.

if there's no water

- the system remains in standby mode.

The blower can stop:

- by the user pressing the "ON-OFF Blower" key button.
- at the end of the blower timeout
- If there's no water level for more than 3 seconds,(led fixed off).

2.1.3 Dry function

Can start:

- Automatically: 8 min after the end of whirlpool or bumping-whirlpool function if the control reads no water level.
- Manually: by the user pressing the "ON-OFF Blower" for 4 seconds only if the pump and the blower are not working and there's no water level.

For both cases

- During all the function the led switches on.

The function can stop:

- If the user presses the ON-OFF Blower key again.
- At the end of the timeout (5 minutes).
- If there is water:
 - a) if automatic function was active then restart the 8 min counter
 - b) if manual function was active then stops

Leggere e conservare queste istruzioni

Astrel Group

+39 0481 637301
info@astrelgroup.com
www.astrelgroup.com

Headquarters
Via Friuli, 10 - Quaternario Uno
31020 San Vendemiano -TV -IT

Legal address & Production plant
Via Isonzo, 21/E
34070 Mossa, GO - IT

C.F. e P.IVA IT 00187070313
Cap. Soc. EUR 500.000 i.v.
REA nr. GO-49936